



All The Park's A Stage

Sit underneath the stars and experience the magic of open-air theatre in the beautiful setting of Regent's Park. **Jo Caird** goes behind the curtains for the classic-packed season ahead.

There are few London experiences more magical than watching the night fall over the Open Air Theatre in Regent's Park. When the performance begins, the outdoor theatre and picturesque glade that surrounds it are bathed in the soft light of early evening. But then, imperceptibly, darkness envelops the auditorium until there is nothing to see but the drama being played out before you. The atmosphere is suddenly, startlingly, intimate.

The Open Air Theatre began life as a temporary venue back in 1932, but attracted major names. Acclaimed writer George Bernard Shaw wrote a play for the venue in 1934 and actress Vivien Leigh starred in a production of Shakespeare's *Henry VIII* in 1936. Interestingly, permanent buildings

only began to take shape in 1953 and it wasn't until 1976 that the current amphitheatre-style auditorium was built.

All My Sons, which kicks off the season, is directed by the venue's artistic director, Timothy Sheader, whose 2010 Open Air Theatre production of Arthur Miller's *The Crucible* was lauded by the critics and earned him a best director gong from *What's On Stage*. The play, which Miller wrote in 1947, is based on the true story of an American businessman who supplied defective aeroplane parts to the military, and explores the idea of the American Dream.

The season continues with *Hobson's Choice*, another story of family strife, this time set in the north of England in the late 19th century (12 Jun-12 Jul), and two further classics of American theatre in the

form of *The Gershwins' Porgy And Bess* (17 Jul-23 Aug) and *To Kill A Mockingbird* (28 Aug-13 Sep). The latter show, based on the iconic novel of the same name by Harper Lee, returns to Regent's Park following last year's sell-out run. The theatre also presents a show for family audiences: a re-imagining of Shakespeare's *Twelfth Night*, with live music, for children aged six and over (21 Jun-12 Jul).

As you sit in the Inner Circle of historic Regent's Park, cast your mind back to John Nash, the architect behind the park, who originally envisaged the area as a place for the sole use of the royal family. It was opened to the public in 1835, and today anyone is welcome – so you really are in a venue that's fit for a king.

For full listing, turn to p. 44

MUSICALS & PERFORMANCES

Billy Elliot The Musical

A northern boy's macho father tries to quash his dream of being a ballet dancer. Set during the financial hardships of the 1980s miners' strike, this Olivier Award-winning show features music by Sir Elton John. Mon-Sat 7.30pm; Thurs & Sat 2.30pm. Seats £19.50-£67.50. www.billyelliottthemusical.com. Victoria Palace, Victoria St, SW1E 5EA. T: 0844-811 0055. **F7**. Station: Victoria.

Bodyguard, The

Terrified of a stalker, a pop star seeks protection. The show is based on the 1992 film, and features Whitney Houston hits inc *I Will Always Love You* and *Saving All My Love For You*. Mon-Sat 7.30pm; Wed & Sat 3pm. Seats £20-£67.50. www.thebodyguardmusical.com. Adelphi, The Strand, WC2R 0NS. T: 0844-579 0094. **E8**. Station: Charing Cross.

Book Of Mormon, The

A hugely popular show from the writers of TV's *South Park*. This controversial satire follows the exploits of two hapless missionaries from the Church Of The Latter Day Saints, and delves into organised religion and other hot topics. Mon-Sat 7.30pm; Wed & Sat 2.30pm. Seats £39.75-£152.50. www.bookofmormonlondon.com. Prince Of Wales, Coventry St, W1D 6AS. T: 0844-482 5110. **E7**. Station: Leicester Sq.

Charlie And The Chocolate Factory

KIDS' PICK Musical version of Roald Dahl's tale about an ordinary boy and an extraordinary confectioner, where a competition has Wonka Bar devotees vying for a behind-the-scenes tour. Mon-Sat 7.30pm; Wed & Sat 2.30pm. Seats £25-£67.50. www.charlieandthechocolatefactory.com. Theatre Royal Drury Ln, Catherine St, WC2B 5JF. T: 0844-858 8877. **D8**. Station: Covent Gdn.

Commitments, The

World premiere run of a stage musical based on Roddy Doyle's book and the popular 1991 film. An Irish music fan sets out to create a live soul band from amateur enthusiasts, with specially-written songs plus old Motown favourites inc *Mustang Sally*. Tues-Sun 7.30pm; Sat & Sun 3pm. Seats £10-£87.50. www.thecommitmentslondon.com. Palace, 109 Shaftesbury Avenue, W1D 8AY. T: 0844-412 4656. **E7**. Station: Leicester Sq.

Dirty Rotten Scoundrels

New musical based on the 1988 film, starring Olivier Award-winning actor Robert Lindsay (*Me And My Girl*) and comedian Rufus Hound. Mon-Sat 7.30pm; Thurs & Sat 3pm. Seats £24.50-£90. www.scoundrelswestend.com. Savoy Theatre, Savoy Ct, Strand. T: 0844-871 3046. **E8**. Station: Charing Cross.

Fings Ain't What They Used T'Be

NEW From 9 May: British soap opera queen Jessie Wallace and Spandau Ballet's Gary Kemp star in this Cockney English musical. Mon-Sat 7.30pm; Sun 3pm. Seats £10-£38. www.stratfordeast.com. Theatre Royal Stratford East, Gerry Raffles Sq, E15 1BN. T: 020-8534 0310. **Off map**. Station: Stratford.



Speaking In Tongues

If understanding the 16th-century language of a Shakespeare play can seem daunting, watching it in a foreign language might sound altogether off-putting. However making that easier is Indian theatre company, Arpana, returning to **Shakespeare's Globe** (p. 44) with its delightful Gujarati production, with subtitles, of the joyful comedy *All's Well That Ends Well* (5-10 May). Also returning to the Globe this month is Olivier Award-winning actor Eve Best in *Antony & Cleopatra* (from 17 May). Having made her directing debut at the theatre last summer, Best now takes the lead in the Bard's tragic tale of politics and romance in ancient Egypt.

I Can't Sing! – The X Factor Musical

This new comedy musical takes a fictional peek behind the scenes of TV talent show *The X Factor*. Co-written by British comic Harry Hill, it features original songs. Mon-Sat 7.30pm; Thurs & Sat 3pm. Seats £20-£65. www.icantsingthemusical.com. London Palladium, Argyll St, W1F 7TF. T: 0844-811 0058. **D7**. Station: Oxford Circus.

In The Heights

NEW From 9 May: Groundbreaking 21st-century musical about life in Manhattan, complete with a hip-hop soundtrack. Mon-Sat 8pm; Thurs 2.30pm; Sat 3.30pm. Seats £12-£22. www.southwarkplayhouse.co.uk. Southwark Playhouse, 77-85 Newington Causeway, SE1 6BD. T: 020-7407 0234. **F9**. Station: Elephant & Castle.

Jersey Boys

Olivier Award-winning story of the American pop sensations, Frankie Valli And The Four Seasons, charting their meteoric career from the mid-1960s. Songs inc *Can't Take My Eyes Off You*, *Sherry* and *Big Girls Don't Cry*. Tues-Sat 7.30; Tues & Sat 3pm; Sun 5pm. Seats £24.50-£69.50. www.jerseyboyslondon.com. Piccadilly Theatre, 16 Denman St, W1D 7DY. T: 0844-871 7630. **E7**. Station: Piccadilly Circus.

BAKERSFIELD MIST, starring Kathleen Turner and Ian McDiarmid, opens at the Duchess Theatre on 10 May (p. 44)

Les Misérables

The world's longest-running musical has lost none of its impact. Adapted from the Victor Hugo novel, it's an epic tale of love and courage. Read our interview with its producer, Sir Cameron Mackintosh (p. 16). Mon-Sat 7.30pm; Wed & Sat 2.30pm. Seats £22.50-£90. www.lesmis.com. Queen's, 51 Shaftesbury Ave, W1D 6BA. T: 0844-482 5160. **D8**. Station: Leicester Sq.

Lion King, The

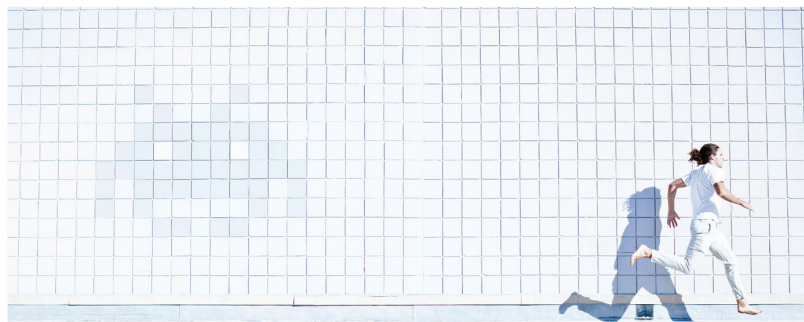
KIDS' PICK Now in its 15th year in London stage, this adaptation of the Disney film has fantastic costumes and puppetry. Tunes inc *Can You Feel The Love Tonight?* and *Circle Of Life*. Tues-Sat 7.30pm; Wed, Sat & Sun 2.30pm. Seats £25-£125. www.thelionking.co.uk. Lyceum, 21 Wellington St, WC2E 7RQ. T: 0844-871 3000. **E8**. Station: Covent Gdn.

Mamma Mia!

A tribute to the music of the Swedish pop legends ABBA, it has a feel-good story that centres on wedding-day revelations on a Greek island. Hit songs inc *The Winner Takes It All* and *Dancing Queen*. Mon-Sat 7.45pm; Thurs & Sat 3pm. Seats £15-£67.50. www.mamma-mia.com. Novello, Aldwych, WC2B 4LD. T: 0844-482 5115. **D8**. Station: Covent Gdn.

Matilda The Musical

Roald Dahl's magical kids' book is brought to life in this acclaimed RSC production. It's about a gifted five-year-old girl whose sadistic headmistress and ignorant family have failed to realise that she's actually a genius. Tues 7pm; Wed-Sat 7.30pm; Wed & Sat 2.30pm; Sun 3pm. Seats £20-£85. www.matildathemusical.com. Cambridge, 32-34 Earlham St, WC2 9HU. T: 0844-412 4652. **D8**. Station: Covent Gdn.



High Climber

In London, a visit to the theatre doesn't always result in a visit to a theatre. Take **The Roof**, part of the LIFT festival, performed on the roof of a purpose-built venue on the South Bank (from 30 May; p. 49). The audience is on its feet during the free running-inspired show, action takes place against the backdrop of the capital's skyline, and sound comes through individual sets of headphones. It's immersive theatre taken – literally – to a new level.

Once

Romance blossoms between an Irish busker and a young Czech mother united by their love of music. This new musical is based on the 2006 film, written by Ireland's Enda Walsh. Mon-Sat 7.30pm; Thurs & Sat 3pm. Seats £19.50-£95. www.oncemusical.co.uk. Phoenix, 110 Charing Cross Rd, WC2H 0JP. T: 0844-871 7629. **D7**. Station: Tottenham Court Rd.

Pajama Game, The

From 2 May: This Doris Day classic transfers from the Chichester Festival Theatre for a limited run (p. 46). Mon-Sat 7.30pm; Wed & Sat 3pm. Seats £18-£85. www.shaftesbury-theatre.co.uk. Shaftesbury, 210 Shaftesbury Ave, WC2H 8DP. T: 0844-871 7627. **E7**. Station: Tottenham Ct Rd.

Phantom Of The Opera, The

A mysterious masked man haunting the Paris Opera House is besotted with a beautiful soprano singer in this Gothic romance. Mon-Sat 7.30pm; Thurs & Sat 2.30pm. Seats £21-£95. www.thephantomoftheopera.com. Her Majesty's, 57 Haymarket, SW1Y 4QL. T: 0844-412 2707. **E7**. Station: Piccadilly Circus.

Stomp

A multi award-winning fusion of theatre, dance, comedy and percussion. Mon & Thurs-Sat 8pm, Sun 6pm; Thurs & Sat 3pm; Sun 3pm. Seats £26-£52.50. www.stomplondon.co.uk. The Ambassadors, West St, WC2H 9ND. T: 0844-811 2334. **D7**. Station: Leicester Sq.

Thriller Live

Non-stop hit songs and razor-sharp choreography celebrate the career of Michael Jackson and the Jackson 5. Tues-Fri & Sun 7.30pm, Sat 4pm & 8pm; Sun 3.30pm. Seats £26.50-£85. www.thrillerlive.com. Lyric, Shaftesbury Ave, W1D 7ES. T: 0844-482 9674. **E7**. Station: Piccadilly Circus.

Urinetown The Musical

To 3 May: Jamie Lloyd directs the UK premiere of this Tony Award-winning musical. The setting is a futuristic city suffering from a drought, corruption and the monopolisation of public toilets. Mon-Sat 7.30pm; Thurs & Sat 2.30pm. Seats £17.50-£49.50. www.urinetown.co.uk. St. James Theatre, 12 Palace St, SW1E 5JA. T: 0844-264 2140. **F7**. Station: Victoria.

We Will Rock You

LAST CHANGE To 31 May: Soap actors Rolan Bell (*EastEnders*) and Kevin Kennedy (*Coronation Street*) are in the cast of this award-winning musical, set in a futuristic world and boasting anthems by the band Queen. Mon-Sat 7.30pm; Wed & Sat 2.30pm. Seats £16.25 (standing)-£91.25. www.wewillrockyou.co.uk. Dominion, 268-269 Tottenham Court Rd, W1T 7AQ. T: 0844-847 1775. **D7**. Station: Tottenham Court Rd.

Wicked

A smash hit in London and all around the world, *Wicked* tells the untold story of the Witches of Oz and how one came to be called 'good' and the other 'wicked'. With spectacular sets and costumes and thrilling music, *Wicked* dazzles. Mon-Sat 7.30pm; Wed & Sat 2.30pm. Seats £15-£95. www.wickedthemusical.co.uk. Apollo Victoria, Wilton Rd, SW1V 1LG. T: 0844-826 8000. **F7**. Station: Victoria.

PLAYS

1984

Following a sold-out run at the Almeida Theatre, this compelling adaptation of Orwell's dystopian novel comes to the West End. Mon-Sat 7.30pm; Wed & Sat 2.30pm. Seats £10-£52. www.1984theplay.co.uk. Playhouse Theatre, Northumberland Ave, WC2N 5DE. T: 020-7359 4404. **E8**. Station: Charing Cross.

39 Steps, The

Comic adaptation of the 1935 Alfred Hitchcock film and John Buchan's novel, where four actors play more than 139 roles between them. British hero Richard Hannay is on the run, being pursued by secret agents during World War I. Mon-Sat 8pm; Wed 3pm; Sat 4pm. Seats £10-£42.50. www.love39steps.com. Criterion, 218-223 Piccadilly, SW1Y 4XA. T: 0844-847 1778. **E7**. Station: Piccadilly Circus.

All My Sons

From 15 May: Arthur Miller's 20th-century classic kicks off Regent's Park's 2014 Open Air season (p. 42). Seats £25-£55. Mon-Sat 7.45pm; Thurs & Sat 2.15pm. www.openairtheatre.com. Open Air Theatre, Regent's Park, NW1 4NU. T: 0844-826 4242. **C6**. Station: Regent's Park.

All's Well That Ends Well

NEW 5-10 May: Performed in Gujarati, this production of the Shakespeare classic is set in the context of 20th-century India (p. 43). Please check for dates and times. Seats £5 (standing)-£38. www.shakespearesglobe.com. Shakespeare's Globe, 21 New Globe Walk, SE1 9DT. T: 020-7401 9919. **E10**. Station: Blackfriars.

Another Country

To 21 June: Scandal rocks a 1930s English public school. Mon-Sat 7.30pm; Thurs & Sat 2.30pm. Seats £10-£19.50. www.atgtickets.com. Trafalgar Studios, 14 Whitehall, SW1A 2DY. T: 0844-871 7632. **E7**. Station: Charing Cross.

Antony & Cleopatra

NEW From 17 May: One of Shakespeare's classic love stories (p. 43). Times vary. Seats £5 (standing)-£38. www.shakespearesglobe.com. Shakespeare's Globe, 21 New Globe Walk, SE1 9DT. T: 020-7401 9919. **E10**. Station: Blackfriars.

Bakersfield Mist

NEW From 10 May: Kathleen Turner and Ian McDiarmid star in a new play about a waitress who is convinced she has picked up a Jackson Pollock artwork at a junk sale. Mon-Sat 7.30pm; Thurs & Sat 3pm. Seats £17.25-£86.25. www.duchesstheatre.co.uk. Duchess, 3-5 Catherine St, WC2B 5LA. 0844-482 9672. **E7**. Station: Covent Gdn.

Blithe Spirit

Angela Lansbury recreates her role as clairvoyant Madame Arcati, which won her a 2009 Tony Award on Broadway. Mon-Sat 7.30pm; Wed & Sat 2.30pm. Seats £12-£61. www.delfontmackintosh.co.uk. Gielgud Theatre, 35 Shaftesbury Ave, W1D 6AR. T: 0844-482 5130. **E7**. Station: Piccadilly Circus.

Fatal Attraction

Kristin Davis (*Sex And The City*) stars in Trevor Nunn's stage version of the 1987 film about a lawyer's affair with an obsessive woman. Mon-Sat 7.30pm; Thurs & Sat 2.30pm. Seats £12-£93.50. www.trh.co.uk. Theatre Royal Haymarket, 18 Suffolk St, SW1Y 4HT. T: 020-7930 8800. **E7**. Station: Piccadilly Circus.

Ghost Stories

To 24 May: Chilling yarns from Jeremy Dyson (*The League Of Gentlemen*) and Andy Nyman (*Severance*) – not for the faint hearted! Suitable for ages 15+. Tues-Fri 8pm; Sat 5pm & 8pm; Sun 4pm & 7pm. Seats £20-£55. www.arts.theatrewestend.com. Arts, 6-7 Great Newport St, WC2 7JB. T: 020-7836 8463. **E8**. Station: Leicester Sq.

WILLY WONKA comes to life in the musical version of *Charlie And The Chocolate Factory* at the Theatre Royal Drury Lane (p. 43)



THE ROOF IMAGE © FOREST WOODWARD/GETTY IMAGES

Q & A Joanna Riding

The actor, who reprises the role of Babe in the West End transfer of the Chichester Festival Theatre production of *The Pajama Game*, tells us why the musical is a must-see.

Were you a fan of *The Pajama Game* before being cast in it?

I'd never seen the show – only the movie version starring Doris Day, and that was when I was very young – yet I was surprised by how many of the songs seemed familiar to me. There are many great songs that have gone on to enjoy fame beyond the show itself.

What do you love about performing in the show?

It's a fabulous ensemble show with many richly written characters. There's a need for great actors who can really sing, really dance and do comedy too; and that's the cast that Richard Eyre, the director, has found.

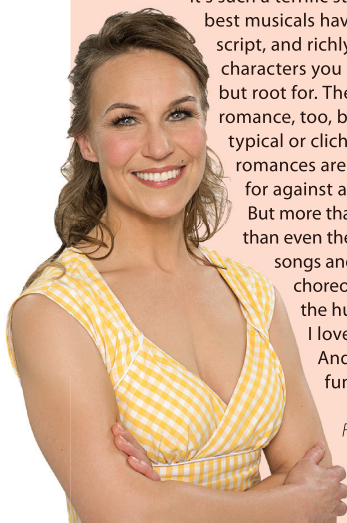
Richard Eyre is an Olivier award-winning director. What was he like to work with?

He is a fiercely intelligent man, yet he is warm and generous, and he trusts the actors he casts. He guides and nurtures them, but he doesn't dictate. He stays open to ideas but doesn't swerve from standing firm when he's certain of something. And he has the dearest chuckle in the whole of theatreland!

Tell us why our readers should go and see the show, *The Pajama Game*.

It's such a terrific story. All the best musicals have a great script, and richly drawn characters you can't help but root for. There is romance, too, but it's not typical or clichéd. These romances are hard fought for against all the odds. But more than this, more than even the wonderful songs and choreography, is the humour. I love funny. And this is one funny show!

For full listing, turn to p. 44



Jeeves & Wooster: Perfect Nonsense

Comedy based on the novel by P.G. Wodehouse, centred brings two of the author's best-loved characters to life: the genteel Bertie Wooster and his unflappable valet Jeeves. Mon-Sat 7.30pm, Wed & Sat 2.30pm. Seats £20-£85. www.jeevesandwoosterplay.com. Duke of York's, 104 St Martin's Ln, WC2N 4BG. T: 0844-871 3051. **E8.** Station: Leicester Sq.

King Lear

Simon Russell Beale takes the lead in Shakespeare's tragedy about a foolish old king swayed by the flattery of his daughters, in a new Sam Mendes production. Check for dates and times. Seats £12-£50. www.nationaltheatre.org.uk. Olivier, National Theatre, South Bank, SE1 9PX. T: 020-7452 3000. **E8.** Station: Waterloo.

Let The Right One In

Based on the Scandinavian vampire movie about two young teenagers, this award-winning play enjoys a limited run West End. For ages 13+. Mon-Sat 7.45pm; Thur & Sat 3pm. Seats £19.50-£65. www.apollotheatrelondon.co.uk. Apollo, Shaftesbury Ave, W1D 7ES. T: 0844-482 9671. **E7.** Station: Piccadilly Circus.

Mousetrap, The

A murderer strikes at a remote country house party, in Agatha Christie's whodunnit. Mon-Sat 7.30pm; Tues 3pm, Sat 4pm. Seats £17.50-£65. www.the-mousetrap.co.uk. St. Martin's, West St, Cambridge Circus, WC2H 9NZ. T: 0844-499 1515. **D8.** Station: Leicester Sq.

Much Ado About Nothing

An Elizabethan-style staging of Shakespeare's classic comedy about two pairs of lovers, Benedick and Beatrice, and Claudio and Hero. Please check for dates and times. Seats. £5 (standing)-£38. www.shakespearesglobe.com. Shakespeare's Globe, 21 New Globe Walk, SE1 9DT. T: 020-7401 9919. **E10.** Station: Blackfriars.

Other Desert Cities

LAST CHANGE To 24 May: Jon Robin Baitz's drama about love and loss. Mon-Sat 7.30pm; Wed & Sat 2.30pm. Seats £10-£75. www.oldvictheatre.com. National Theatre, South Bank, SE1 9PX. T: 0844-871 7628. **E8.** Station: Waterloo.

The Silver Tassie

Irish playwright Sean O'Casey's 1928 anti-war drama, written in 1920s, set in Dublin during World War I. Please check for dates and times. Seats £15-£50. www.nationaltheatre.org.uk. National Theatre, South Bank, SE1 9PX. T: 020-7452 3000. **E8.** Station: Waterloo.

Small Family Business, A

To 31 May: Alan Ayckbourn's comedy about entrepreneurial greed in the 1980s stars Nigel Lindsay. In rep. Tickets £15-£50. www.nationaltheatre.org.uk. National Theatre, South Bank, SE1 9PX. T: 020-7452 3000. **E8.** Station: Waterloo.

Taste Of Honey, A

LAST CHANGE To 11 May: Shelagh Delaney's taboo-breaking tale is set in gritty, working-class Manchester back in the 1950s. Please check for dates and times. Seats £12-£50. www.nationaltheatre.org.uk. Lyttelton, National Theatre, South Bank, SE1 9PX. T: 020-7452 3000. **E8.** Station: Waterloo.

Titus Andronicus

A revival of Lucy Bailey's spectacular take on Shakespeare's violent tale of mutilation, rape and murder in Ancient Rome. Please check for dates and times. Seats £5 (standing)-£42. www.shakespearesglobe.com. Shakespeare's Globe, 21 New Globe Walk, SE1 9DT. T: 020-7401 9919. **E10.** Station: Blackfriars.

War Horse

A heartbreaking story, adapted from Michael Morpurgo's book, centres on the bond between a boy and his horse. When his four-legged friend is sold to the World War I cavalry, the boy lies about his age so he can enlist. Mon, Wed-Sat 7.30pm; Tues 7pm; Thurs & Sat 2.30pm. Seats £15-£90. www.warhorseonstage.com. New London, 166 Drury Ln, WC2B 5PW. T: 020-7452 3000. **D8.** Station: Holborn.

Woman In Black, The

Ghostly goings-on at a windswept country estate, based on Susan Hill's book. A junior solicitor heads to spooky Eel Marsh House to sort out the affairs of a recently deceased recluse. Tues-Sat 8pm; Tues & Thurs 3pm; Sat 4pm. Seats £17.50-£60. www.thewomaninblack.com. Fortune, Russell St, WC2B 5HH. T: 0844-871 7626. **D8.** Station: Covent Gdn.

CONCERTS: CLASSICAL

Barbican Hall

13 May: *Kronos At 40.* A celebration of the quartet with music by composers inc Philip Glass. **10, 16, 20, 25, 29, 30 May:** Concerts celebrating the 80th birthday of celebrated composer Harrison Birtwistle. www.barbican.org.uk. Barbican Centre, Silk St, EC2Y 8DS. T: 0845-120 7500. **D10.** Station: Barbican.

Cadogan Hall

10 May: *Sir James Galway – The Man With The Golden Flute.* A performance by the virtuoso flute player. **26 May:** *La Chambre Philharmonique.* Using period instruments. www.cadoganhall.com. 5 Sloane Terr, SW1X 9DQ. T: 020-7730 4500. **G6.** Station: Sloane Sq.

Kings Place

1 May: *Shakespeare By Strauss, Rautavaara & James Francis.* Song recital. **4 May:** Badke String Quartet (*Hayden's String Quartet in F*). **14 May:** *Shostakovich: Piano Quintet.* Carducci Quartet with Charles Owen & Katherine Gowers. **28 May:** *Christoph Denoth Guitar Recital: Dowland, Britten, Sor & Villa-Lobos.* www.kingsplace.co.uk. 90 York Way, N1 9AG. T: 0844-264 0321. **Off map.** Station: King's Cross.

Purcell Room

7 May: Alexander Ardakov (Chopin/Grieg/Liszt). **13 May:** *The Nostalgic Violin.* Piano and violin recital. www.southbankcentre.co.uk. Southbank Centre, Belvedere Rd, SE1 8XX. T: 020-7960 4200. **E8.** Station: Waterloo.

Queen Elizabeth Hall

8 May: *Steven Isserlis & Olli Mustonen, Piano.* Sibelius, Shostakovich and work by Mustonen. **19 May:** *Nelson Freire, Piano.* Beethoven, Debussy, Rachmaninov and Chopin. www.southbankcentre.co.uk. Southbank Centre, Belvedere Rd, SE1 8XX. T: 020-7960 4200. **E8.** Station: Waterloo.

Royal Albert Hall

10 May: *Tchaikovsky Gala* (Royal Philharmonic Orchestra). **11 May:** *Mozart's Requiem.* **18 May:**

DID YOU KNOW?
The Mousetrap opened in the West End in 1952 and has run continuously.



The passionate ballet *Sweet Violets* is on stage at the Royal Opera House (p. 49)

Verdi's Requiem. **29-31 May:** *Star Trek – Live In Concert* (p. 7). www.royalalberthall.com. Kensington Gore, SW7 2AP. T: 020-7589 8212. **F4.** Station: South Kensington.

Royal Festival Hall

1 May: Philharmonia Orchestra (Prokofiev). **4 May:** *BBC Frozen Planet In Concert*. **6 May:** Orchestra of the Age of Enlightenment (Haydn's *The Creation*). **8 May:** Philharmonia Orchestra (Schubert's *The Great*). **14 May:** Charles Dutoit Conducts *Saint-Saens: Organ Symphony*. **31 May:** Philharmonia Orchestra (Dvorák's *From The New World*). www.rfh.org.uk. Southbank Centre, Belvedere Rd, SE1 8XX. T: 020-7960 4200. **E8.** Station: Waterloo.

St James's Piccadilly

This 1676 church, designed by Sir Christopher Wren, has a wonderful programme of evening concerts. Please check for listings. Enjoy free lunchtime recitals too every Mon, Wed & Fri 1.10pm. www.sjp.org.uk. 197 Piccadilly, W1J 9LL. T: 020-7381 0441. **E7.** Station: Piccadilly Circus.

St. John's, Smith Square

16-24 May: *Lufthansa Festival Of Baroque Music*. Includes concerts featuring works by Handel, Bach and Purcell. www.sjss.org.uk. Smith Sq, SW1P 3HA. T: 020-7222 1061. **F8.** Station: Westminster.

St. Martin-In-The-Fields

Beautiful 18th-century church hosts an extensive programme of concerts. Plus free lunchtime music recitals at 1pm on Mon, Tues and Fri. www.smitf.org. Trafalgar Sq, WC2N 4JJ. T: 020-7766 1100. **E8.** Station: Charing Cross.

Wigmore Hall

Luxurious concert venue dating from 1899. **10, 12 May:** Takacs Quartet (Shostakovich/ Webern/ Beethoven). **22 May:** Ian Bostridge (Schubert). **28 May:** Endellion String Quartet (Haydn/ Beethoven/Schubert). www.wigmore-hall.org.uk. 36 Wigmore St, W1U 2BP. T: 020-7935 2141. **D6.** Station: Bond St.

CONCERTS: POP, JAZZ & WORLD

Barbican

19 May: Chick Corea. **25-26 May:** Emmylou Harris. **31 May:** Sun Ra Arkestra. www.barbican.org.uk. Barbican Centre, Silk St, EC2Y 8DS. T: 0845-120 7500. **D10.** Station: Barbican.

Eventim Apollo

(Formerly Hammersmith Apollo). **1 May:** Billy Bragg. **23 May:** Professor Green. **30-31 May:** Julie Andrews. www.eventimapollo.com. 45 Queen Caroline St, W6 9QH. T: 0844-844 4748. **Off map.** Station: Hammersmith.

Indigo2

1 May: Roberta Flack. www.theindigo2.com. Peninsula Sq, Greenwich, SE10 0AX. T: 0844-856 0202. **Off map.** Station: North Greenwich.

Jazz Café

Live music and club nights. **6 May:** Fatima. **7 May:** Terry Reid. **10 May:** Corey Harris Band + Mulele Matondo Afrika. **31 May:** Camden Rocks Festival. www.mamacolive.com/thejazzcafe. 5 Parkway, NW1 7PG. T: 020-7688 8899. **Off map.** Station: Camden Town.

London Palladium

4 May: Engelbert Humperdinck. **18 May:** Don Williams. www.reallyuseful.com. Argyll St, W1 7TF. T: 0844-412 2704. **D7.** Station: Oxford Circus.

O2 Academy Brixton

Gigs and club nights. **2 May:** Korn. **9 May:** Janelle Monáe. **25 May:** Reggae Sound Splash. www.o2academybrixton.co.uk. 211 Stockwell Rd, SW9 9SL. T: 0844-477 2000. **Off map.** Station: Brixton.

O2 Arena, The

Indoor arena with a 20,000 capacity. **6 May:** Miley Cyrus. **25 May:** Little Mix. **26 May:** Barry Manilow. **27, 28, 30, 31 May:** Katy Perry. www.theo2.co.uk.

Peninsula Sq, SE10 0DX. T: 0844-856 0202.

Off map. Station: North Greenwich.

O2 Shepherds Bush Empire

11, 12 May: Courtney Love. **17 May:** Echo & the Bunnymen. www.o2shepherdsbushempire.co.uk. Shepherds Bush Green, W12 8TT. T: 0844-477 2000. **Off map.** Station: Shepherds Bush.

Queen Elizabeth Hall

10 May: Turin Brakes. **29 May:** Sam Lee & Friends. www.southbankcentre.co.uk. Southbank Centre, Belvedere Rd, SE1 8XX. T: 020-7960 4200. **E8.** Station: Waterloo.

Ronnie Scott's

1-3 May: Frank Sinatra Jr. **5-10 May:** Loose Tubes. **12-13 May:** Chaka Khan. **15-17 May:** Kenny Barron Trio. www.ronniescotts.co.uk. 47 Frith St, W1D 4HT. T: 020-7439 0747. **D7.** Station: Tottenham Court Rd.

Roundhouse

27-28 May: Paloma Faith. **30 May:** Sam Smith. www.roundhouse.org.uk. Chalk Farm Rd, NW1 8EH. T: 0844-482 8008. **Off map.** Station: Chalk Farm.

Royal Albert Hall

2 May: Mehfil-e-Sartaaj. **8 May:** Yes. **13, 19 May:** Julio Iglesias. **15 May:** Tori Amos. www.royalalberthall.com. Kensington Gore, SW7 2AP. T: 020-7589 8212. **F4.** Station: South Kensington.

Royal Festival Hall

3 May: Neil Finn. **23 May:** Anoushka Shankar (p. 82). **24 May:** Sukhwinder Singh. Please check for full programme, times and ticket prices. www.rfh.org.uk. Southbank Centre, Belvedere Rd, SE1 8XX. T: 020-7960 4200. **E8.** Station: Waterloo.

Wembley Arena

13-14 May: Barry Manilow. www.wembleyarena.co.uk. Arena Square, Engineers Way, Middlesex. T: 020-8782 5500. **Off map.** Station: Wembley Park.

OPERA

Bel Canto

A quartet of talented young singers, from the Guildhall School Of Music, entertain while you dine at this French restaurant (Thur-Sat). www.lebelcanto.com. Corus Hotel Hyde Park, 1 Lancaster Gate, W2 3LG. T: 020-7262 1678. **E4.** Station: Lancaster Gate.

London Coliseum

Home of English National Opera. **From 3 May:** *Thebans*. Composer Julian Anderson and playwright Frank McGuinness's tragic new opera. **From 16 May:** *Così fan Tutte* (Mozart). Seats £5-£99. www.eno.org. 33 St. Martin's Ln, WC2N 4ES. T: 020-7845 9300. **E8.** Station: Charing Cross/Leicester Sq.

Royal Opera House

Home of The Royal Opera. **To 15 May:** *Le Nozze Di Figaro*. Mozart's comedy. **From 10 May:** *Tosca* (Puccini). Jonathan Kent's version is set in 1800 Rome. **From 29 May:** *Dialogues Des Carmélites*. Poulenc's opera. Seats £8-£225. www.roh.org.uk. Bow St, WC2E 9DD. T: 020-7304 4000. **D8.** Station: Covent Gdn.

Sarastro

Young opera singers perform popular arias alongside a string quartet of music students, to enhance your dining experience in this elaborate restaurant. Sun & Mon 8.30pm-9.30pm; Sun 2.30pm. www.sarastro-restaurant.com. 126 Drury Ln, WC2B 5QG. T: 020-7836 0101. **D8.** Station: Covent Gdn.

ROYAL OPERA HOUSE PHOTO © BILL COOPER/ROYAL OPERA HOUSE

DANCE

Peacock Theatre

6-24 May: *Havana Rakatan*. Cuba-inspired show.
From 27 May: *Flash Mob*. Stars from TV dance shows perform in a huge range of styles. Seats £15-£42. www.sadlerswells.com. Portugal St, WC2A 2HT. T: 0844-412 4322. **D8**. Station: Holborn.

Royal Opera House

Home of The Royal Ballet. **14-26 May:** *Serenade/Sweet Violets/DGV: Danse À Grande Vitesse* (Tchaikovsky/Rachmaninoff/Nyman). Mixed programme of work by three different directors. www.roh.org.uk. Bow St, WC2E 9DD. T: 020-7304 4000. **D8**. Station: Covent Gdn.

Sadler's Wells

3-5 May: *Breakin' Convention - International Festival Of Hip Hop Dance Theatre*. **8-10 May:** *Tragédie* (Olivier Dubois Company). **20-24 May:** *Rooster* (Rambert). Seats £8-£38. www.sadlerswells.com. Rosebery Ave, EC1R 4TN. T: 0844-412 4300. **C9**. Station: Angel.

CHILDREN & FAMILIES

Alice In Wonderland

From 24 May: Lewis Carroll's classic children's tale is brought to life. Seats £8.50-£16. Check for dates and times. www.greenwichtheatre.org.uk. Greenwich, Crooms Hill, SE10. T: 020-8858 7755. **Off map**. Station: Greenwich/Cutty Sark.

Minotaur

To 24 May: Ancient myth and the modern day collide. Suitable for ages 8-14. Check website for dates and times. Seats. £10-£16. Polka Theatre, 240 The Broadway, SW19 1SB. T: 020-8543 4888. **Off map**. South Wimbledon.

FESTIVALS & SEASONS

BFI Southbank

Enjoy film and TV from the British Film Institute's archives. www.bfi.org.uk. BFI Southbank, Belvedere Rd, SE1 1XT. T: 020-7928 3232. **E8**. Station: Waterloo.

Hanover Rules!

NEW **From 1 May:** Celebrating 300 years of the Hanoverian Succession, the Handel House Museum features various performers live in concert, from flautists to harpsichordists. Seats £9. www.handelhouse.org. Handel House Museum, 25 Brook St, W1K 4HB. T: 020-7495 1685. **D6**. Station: Bond St.

Lift 2014

NEW **From 28 May:** The biannual London International Festival Of Theatre has shows in 17 venues across the city. It features a variety of contemporary performances from all over the world (p. 44). www.liftfestival.com

London Wonderground

NEW **From 7 May:** This fun summer-long festival is a feast of magic shows, comedy, alternative cabaret and music (p. 8). www.londonwonderground.co.uk. Jubilee Gdns, Belvedere Rd, SE1 8XX. T: 0844-545 8282. **E8**. Station: Waterloo.

Udderbelly

The purple cow returns to host comedy, cabaret, music and kids' events at this annual festival on the South Bank. The grounds are surrounded by food and drink stalls. Please check for full listings. www.udderbelly.co.uk. Jubilee Gdns, Belvedere Rd, SE1 8XX. T: 0844-847 9910. **E8**. Station: Waterloo.

FILM

Institute Of Contemporary Arts (ICA)

An art-house cinema and venue, which screens films from around the world. The venue also houses an art gallery, café/bar and excellent bookshop. **7 May:** *Cut Ups & Towers Open Fire*. Enjoy screenings of the collage films made by William S. Burroughs and Brion Gysin. **From 20 May:** *The Listening Eye*. An exciting display focusing on the work of Polish painter, sculptor and filmmaker Walerian Borowczyk (1923-2006). www.ica.org.uk.

The Mall, SW1Y 5AH. T: 020-7930 3647. **E7**. Station: Piccadilly Circus.

The Lounge At ODEON Whiteleys

Watch films in the intimate screening rooms, with comfortable leather seats, while dining on an exclusive menu that's been put together by award-winning chef Rowley Leigh; food served directly to your seat. Please check programme for films. www.odeon.co.uk/helounge. Whiteleys Of Bayswater, Queensway, W2 4YL. T: 0871-2244 007. **Off map**. Station: Queensway.

A PIECE OF LIVING HISTORY

CELEBRATING 350 YEARS



**BEATING
RETREAT
2014**

FEATURING
THE MASED BANDS OF HER MAJESTY'S ROYAL MARINES

AND SPECIAL GUESTS
THE BANDS OF THE ROYAL NETHERLANDS AND US MARINE CORPS

3-4 JUNE 2014
**HORSE GUARDS PARADE
 LONDON**

TICKETS FROM £12
CALL: 0844 847 2504



in support of




Promoted by RNRMC Enterprises Limited. Registered office: Building 29, HMS EXCELLENT, Whale Island, Portsmouth, Hampshire, PO2 8ER. RNRMC Enterprises Limited gifts all of its profits to The Royal Navy and Royal Marines Charity (No.1117794).

SPAS & SALONS



Retail Therapy

Selfridges is the latest department store to open its own in-house spa, by the name of Cowshed. **Jo Caird** pays a visit.

Shopping can be an exhausting experience. Some of the major stores and shopping centres are spread over hundreds of thousands of square feet, which means you're getting a work-out just by strolling about. Fortunately, big names such as Harrods and Fortnum & Mason have come up with a neat solution: in-house spas and salons where you can enjoy some pampering before getting back out to shop.

The latest arrival is the funky beauty brand Cowshed, which has opened a branch in Selfridges. Owned by the group behind the Soho House clubs and hotels, Cowshed started out at Babington House spa in Somerset in 1998 before growing.

The company have expanded worldwide, and the Selfridges spa is their sixth London site. The location is handily on the ground

floor of the store, sandwiched between the famed food hall and the beauty hall. When I arrived for my Cowshed manicure, the mood was calming. The manicure also includes filing and cuticle tidying, followed by an exfoliation with amazing smelling spearmint sea salt scrub, a massage with sandalwood intensive hand and foot treatment and a polish. I felt so relaxed during the massage that I almost fell asleep.

There are two treatment rooms for face and body treatments, but manicures and pedicures are done in an open area, which is done up in Cowshed's signature homely shabby-chic style. As treatments range from 15 to 45 minutes, it's the perfect pick-me-up during a tiring day's shopping.

*Cowshed, Selfridges, 400 Oxford Street, W1A 1AB.
T: 020 3728 0000. www.cowshedonline.com*

Relaxation In Store

Fortnum & Mason (below) have packages that include champagne and chocolate. Harrods is home to Urban Retreat, and Liberty contains Josh Wood Atelier salon. For a more unusual treatment, Westfield London offers water jet massages – without removing any clothes – courtesy of the Aqua Massage.

