



## All London's A Stage

**Jo Caird** visits Shakespeare's Globe, a loving recreation of the Bard's theatre, and finds the best spots to enjoy a show outside.

It might seem strange, given that London is prone to drizzle, that outdoor theatre is such a tradition. But, every summer, you'll find some of the city's greatest outdoor spaces acting as surrogate homes to theatre shows. One purpose-built space is Shakespeare's Globe, which is a loving and accurate recreation of the open-air theatre the Bard used to stage his plays.

Opened in 1997, the Globe was the lifelong dream of American actor, director and producer Sam Wanamaker, who sadly died before the theatre was finished. But he ended his life confident that his ambition to create a historically accurate home for Shakespeare in London would be fulfilled. Earlier this year, a second space named after the actor was opened at the theatre – the Sam Wanamaker Playhouse, a candlelit

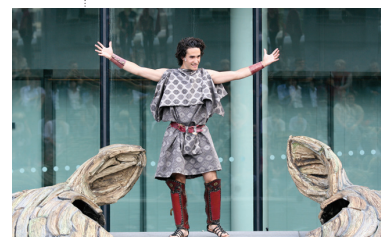
indoor venue that stages Jacobean drama throughout the autumn and winter.

This summer at the Globe, you will find two Shakespeare productions that couldn't be more different from each other: the heart-wrenching tragedy of *King Lear* (6-9, 18-23 Aug) and the slapstick antics of *The Comedy Of Errors* (from 30 Aug). *King Lear* is played by Joseph Marcell, an English actor best known as Geoffrey the butler in the hit American sitcom *The Fresh Prince Of Bel-Air*. As for *The Comedy Of Errors*, Shakespeare's hilarious tale of two sets of identical twins separated at birth is directed by the award-winning Blanche McIntyre. And, proving it's not all about the Bard, there is also the new Crusades play, *Holy Warriors* (to 24 Aug), by David Eldridge.

For full listings, turn to p. 50

## From Plays To Opera

More outdoor theatre is on offer at Regent's Park Open Air Theatre, which this month shows *The Gershwins' Porgy And Bess* (to 23 Aug; p. 50) and a recreation of Harper Lee's *To Kill A Mockingbird* (from 28 Aug; p. 50). At the More London Free Festival (p. 55; below), you can watch bite-sized family-friendly versions of Wagner's epic *Ring Cycle* (6-31 Aug) by the Thames.





## MUSICALS & PERFORMANCES

### Avenue Q

**26-30 Aug:** Irreverent comedy musical about a group of puppets undergoing existential crises. Tues-Thur & Sat 7.30pm; Fri 5pm & 8.30pm; Sat 2.30pm. Seats £17.90-£42.40. [www.atgtickets.com](http://www.atgtickets.com). New Wimbledon, 93 The Broadway, SW19 1QG. T: 0844-871 7646. **Off map.** Station: Wimbledon.

### Billy Elliot The Musical

During the 1980s miners' strike, a boy's macho father tries to quash his dream of being a ballet dancer. Award-winning show with music by Sir Elton John. Mon-Sat 7.30pm; Thur & Sat 2.30pm. Seats £20.70-£68.70. [www.billyelliottthemusical.com](http://www.billyelliottthemusical.com). Victoria Palace, Victoria St, SW1E 5EA. T: 0844-811 0055. **F7.** Station: Victoria.

### Bodyguard, The

A pop star finds love with her bodyguard. Based on the 1992 film, it features Whitney Houston hits inc *I Will Always Love You*. Mon-Sat 7.30pm; Wed & Sat 3pm. Seats £20-£95. [www.thebodyguardmusical.com](http://www.thebodyguardmusical.com). Adelphi, The Strand, WC2R 0NS. T: 0844-579 0094. **E8.** Station: Charing Cross.

### Bollywood Showstoppers

**3 Aug:** Shahid Kapoor and Sonakshi headline this four-hour song and dance spectacular. Seats £40-£125. 6.30pm. [www.theo2.co.uk](http://www.theo2.co.uk). The O2, Peninsula Square, SE10 0DX. T: 0844-856 0202. **Off map.** Station: North Greenwich.

### Book Of Mormon, The

This controversial satire, from the writers of TV's *South Park*, follows the exploits of two hapless missionaries from the Church Of Latter Day Saints. Winner of four Olivier Awards, inc best new musical. Mon-Sat 7.30pm; Wed & Sat 2.30pm. Seats £37.50-£150. [www.bookofmormonlondon.com](http://www.bookofmormonlondon.com). Prince Of Wales, Coventry St, W1D 6AS. T: 0844-482 5110. **E7.** Station: Leicester Sq.

### Charlie And The Chocolate Factory

A new musical version of Roald Dahl's tale about an ordinary boy and an extraordinary confectioner, where a once-in-a-lifetime competition has Wonka Bar devotees vying for a behind-the-scenes tour. A mostly new score inc the 1971 film song *Pure Imagination*. Mon-Sat 7.30pm; Wed & Sat 2.30pm. Seats £25-£94. [www.charlieandthechocolatefactory.com](http://www.charlieandthechocolatefactory.com). Theatre Royal Drury Ln, Catherine St, WC2B 5JF. T: 0844-858 8877. **D8.** Station: Covent Gdn.

### Commitments, The

New musical based on Roddy Doyle's book and the popular 1991 film. An Irish music fan sets out to create a live soul band from amateur enthusiasts, with a plethora of hit songs inc *Mustang Sally*. Tues-Sun 7.30pm; Sat & Sun 3pm. Seats £10-£85. [www.thecommitmentslondon.com](http://www.thecommitmentslondon.com). Palace, 109 Shaftesbury Avenue, W1D 8AY. T: 0844-412 4656. **E7.** Station: Leicester Sq.

### Dirty Rotten Scoundrels

The UK premiere of a fantastic new musical about conmen based on the 1988 film starring Olivier Award-winning actor Robert Lindsay (*Me And My Girl*) and comedian Rufus Hound. Mon-Sat 7.30pm; Thur & Sat 3pm. Tickets £24.50-£90. [www.scoundrelswestend.com](http://www.scoundrelswestend.com). Savoy Theatre, Savoy Ct, Strand. T: 0844-871 3046. **E8.** Station: Charing Cross.



## Dance The Night Away

It's all about the Russians at the grand **Royal Opera House** this summer, when the world-famous **Mariinsky Ballet Summer Season** sets up home for an exciting season of dance (to 16 Aug; p. 52). The company is performing eight spectacular ballets, including Konstantin Sergeyev's classic production of Tchaikovsky's romantic masterpiece **Swan Lake** (left; 1-7, 13-14 Aug). Choreographed in 1950, this ballet has been a Mariinsky favourite around the world ever since. Fans of more innovative takes on classic scores will love Alexei Ratmansky's **Cinderella** (15-16 Aug), which weaves together a host of different dance styles to bring to life Prokofiev's soaring score. Take your seats and get ready for some stunning dance!

### Faulty Towers The Dining Experience

The much-loved TV show *Faulty Towers* comes to life via an interactive dining experience. Enjoy a three-course meal while actors play the iconic characters. [www.faultytowers.net](http://www.faultytowers.net). Torquay Suite Theatre, Charing Cross Hotel, WC2N 5HX. T: 0845-1544 145. **E8.** Station: Charing Cross.

### Forbidden Broadway

**LAST CHANCE To 16 Aug:** New York's longest-running musical revue returns to London, full of new material. Tues-Sat 8pm; Sat & Sun 3.30pm. Seats £27.50-£35. [www.menierchocolatefactory.com](http://www.menierchocolatefactory.com). Menier Chocolate Factory, 53 Southwark St, SE1 1RU. T: 020-7378 1713. **E10.** Station: Borough.

### Jersey Boys

Olivier Award-winning story of American pop sensations Frankie Valli And The Four Seasons, charting their meteoric career from the mid-1960s. Songs inc *Can't Take My Eyes Off You*, *Sherry* and *Big Girls Don't Cry*. It's now a hit movie directed by Clint Eastwood. Tues-Sat 7.30; Tues & Sat 3pm; Sun 5pm. Tickets £22.50-£85. [www.jerseyboyslondon.com](http://www.jerseyboyslondon.com). Piccadilly Theatre, 16 Denman Street, W1D 7DY. T: 0844-871 7630. **E7.** Station: Piccadilly Circus.

### Les Misérables

The world's longest-running musical has lost none of its impact. Adapted from the Victor Hugo novel, it's an epic tale of love and courage amid a violent 1832 Paris uprising in post-Revolutionary France. Mon-Sat 7.30pm; Wed & Sat 2.30pm. Seats £10-£94. [www.lesmis.com](http://www.lesmis.com). Queen's, 51 Shaftesbury Ave, W1D 6BA. T: 0844-482 5160. **D8.** Station: Leicester Sq.

### Let It Be

The hit show celebrating the music of The Beatles returns for a strictly limited run. Mon & Wed-Sat 7.30pm; Sat 3pm; Sun 3.30pm & 7pm. Seats £15-£65. [www.letitbelondon.com](http://www.letitbelondon.com). Garrick, 2 Charing Cross Rd, WC2H 0HH. T: 0844-412 4662. **E8.** Station: Leicester Sq.

### Lion King, The

Now in its 15th year on the London stage, this is a wonderful adaptation of the Disney film with ingenious costumes and innovative puppetry. The evil Scar sets out to kill lion prince Simba and claim the throne. Tunes inc *Can You Feel The Love Tonight?* and *Circle Of Life*. Tues-Sat 7.30pm; Wed, Sat & Sun 2.30pm. Seats £25-£125. [www.thelionking.co.uk](http://www.thelionking.co.uk). Lyceum, 21 Wellington St, WC2E 7RQ. T: 0844-871 3000. **E8.** Station: Covent Gdn.

### Mamma Mia!

This tribute to the music of the Swedish pop legends ABBA has a wonderful feel-good story that centres on wedding-day revelations on a Greek island. Hit songs inc *The Winner Takes It All*, *Gimme! Gimme! Gimme!* and *Dancing Queen*. Mon-Sat 7.45pm; Thur & Sat 3pm. Seats £15-£67.50. [www.mamma-mia.com](http://www.mamma-mia.com). Novello, Aldwych, WC2B 4LD. T: 0844-482 5115. **D8.** Station: Covent Gdn.

### Matilda The Musical

Roald Dahl's magical kids' book is brought to life in this acclaimed RSC production by British writer Dennis Kelly and Australian comic Tim Minchin. It's about a gifted five-year-old whose sadistic headmistress and ignorant family have failed to realise that she's actually a genius (p. 50). Tues 7pm; Wed-Sat 7.30pm; Wed & Sat 2.30pm; Sun 3pm. Seats £20-£85. [www.matildathemusical.com](http://www.matildathemusical.com). Cambridge, 32-34 Earlam St, WC2 9HU. T: 0844-412 4652. **D8.** Station: Covent Gdn.

### Miss Saigon

Sir Cameron Mackintosh's blockbuster musical about a love affair during the Vietnam War returns to the West End, where it began life 25 years ago. Inc songs *I Still Believe* and *Sun And Moon*. Mon-Sat 7.30pm; Thur & Sat 2.30pm. Seats £27.50-£67.50. [www.miss-saigon.com](http://www.miss-saigon.com). Prince Edward Theatre, 28 Old Compton St, W1D 4HS. T: 0844-482 5151. **D7.** Station: Leicester Sq.



## All That Jazz

The **Canary Wharf Jazz Festival**, which is London's largest free jazz event, returns for three days of soulful singing, party-starting brass and virtuoso jazz instrumentals (15-17 Aug; p. 54). With the ultra-modern skyscrapers of London's financial district as a backdrop, headliners **Andy Sheppard Quartet** (left), **Ciyo Brown's The Motown Sound** and **Riot Jazz Brass Band** will get your toes tapping. Quirker acts include the **Yiddish Twist Orchestra** and the **Mercury Prize-nominated Polar Bear**. Make sure you look out for newcomer **ESKA**, a talented young London singer who already has fans in the form of **Jamie Cullum** and **DJ Gilles Peterson**.

### Once

Romance blossoms between an Irish busker and a young Czech woman united by their love of music. This new musical is based on the 2006 film, written by Ireland's Enda Walsh, and inc the Oscar-winning song *Falling Slowly*. Mon-Sat 7.30pm; Thur & Sat 3pm. Seats £19.50-£95. [www.oncemusical.co.uk](http://www.oncemusical.co.uk). Phoenix, 110 Charing Cross Rd, WC2H 0JP. T: 0844-871 7629. **D7**. Station: Tottenham Court Rd.

### Pajama Game, The

This Doris Day classic has transferred from the Chichester Festival Theatre for a limited run. Mon-Sat 7.30pm; Wed & Sat 3pm. Tickets £18-£85. [www.thepajamagamethemusical.com](http://www.thepajamagamethemusical.com). Shaftesbury Theatre, 210 Shaftesbury Ave, WC2H 8DP. T: 0844-871 3000. **D7**. Station: Leicester Sq.

### Phantom Of The Opera, The

A mysterious masked man haunting the Paris Opera House is besotted with a beautiful soprano singer in this gothic romance. Based on the novel by French writer Gaston Leroux, its songs inc *The Music Of The Night* and *All I Ask Of You*. Mon-Sat 7.30pm; Thur & Sat 2.30pm. Seats £21-£95. [www.thephantomoftheopera.com](http://www.thephantomoftheopera.com). Her Majesty's, 57 Haymarket, SW1Y 4QL. T: 0844-412 2707. **E7**. Station: Piccadilly Circus.

### Stomp

A multi award-winning fusion of theatre, dance, comedy and rhythmic percussion. Performers innovate with everyday items (dustbin lids, lighters, a kitchen sink) to create music and

spectacle. Mon & Thur-Sat 8pm; Sun 6pm; Thur & Sat 3pm & 8pm; Sun 3pm & 6pm. Seats £26-£52.50. [www.stomplondon.co.uk](http://www.stomplondon.co.uk). The Ambassadors, West St, WC2H 9ND. T: 0844-811 2334. **D7**. Station: Leicester Sq.

### Thriller Live

Non-stop hit songs and razor-sharp choreography celebrate the career of Michael Jackson and the Jackson 5. Songs inc *Can You Feel It* and *Billie Jean*. Tues-Fri & Sun 7.30pm; Sat 4pm & 8pm; Sun 3.30pm. Seats £26.50-£84. [www.thrillerlive.com](http://www.thrillerlive.com). Lyric, Shaftesbury Ave, W1D 7ES. T: 0844-482 9674. **E7**. Station: Piccadilly Circus.

### Top Hat

**12-23 Aug:** This award-winning dance show evokes the glamour of Hollywood's golden age and the tap-dancing magic of Fred Astaire and Ginger Rogers. Tues-Sat 7.30pm; Wed & Sat 2.30pm. Seats £17.90-£49.40. [www.ambassadorickets.com](http://www.ambassadorickets.com). New Wimbledon, The Broadway, SW19 1QG. T: 020-8545 7900. **Off map**. Station: Wimbledon.

### Wicked

A smash hit in London and all around the world, *Wicked* is based on the novel by Gregory Maguire and tells the untold story of the Witches of Oz and how one came to be called 'good' and the other 'wicked'. With spectacular sets and costumes, and thrilling music, *Wicked* dazzles the eyes and ears. Mon-Sat 7.30pm; Wed & Sat 2.30pm. Seats £15-£95. [www.wickedthemusical.co.uk](http://www.wickedthemusical.co.uk). Apollo Victoria, Wilton Rd, SW1V 1LG. T: 0844-826 8000. **F7**. Station: Victoria.

## PLAYS

### 1984

**LAST CHANCE** **To 23 Aug:** Following a sold-out run at the Almeida Theatre, this compelling adaptation of George Orwell's dystopian novel plays a limited run in the West End. Mon-Sat 7.30pm; Wed & Sat 2.30pm. Seats £10-£85. [www.1984theplay.co.uk](http://www.1984theplay.co.uk). Playhouse Theatre, Northumberland Ave, WC2N 5DE. T: 020-7359 4404. **E8**. Station: Charing Cross.

### 39 Steps, The

Comic adaptation of the 1935 Alfred Hitchcock film and John Buchan's novel, in which four actors play more than 139 roles between them. British hero Richard Hannay is on the run, being pursued by secret agents during World War I. Mon-Sat 8pm; Wed 3pm; Sat 4pm. Seats £15-£65. [www.love39steps.com](http://www.love39steps.com). Criterion, 218-223 Piccadilly, SW1Y 4XA. T: 0844-847 1778. **E7**. Station: Piccadilly Circus.

### Bakersfield Mist

**LAST CHANCE** **To 30 Aug:** Kathleen Turner and Ian McDiarmid take to the stage in this offbeat play about a waitress convinced she has picked up an original Jackson Pollock artwork at a junk sale. Mon-Sat 7.30pm; Thur & Sat 3pm. Seats £24-£51.50. [www.nimaxtheatres.com](http://www.nimaxtheatres.com). Duchess, 3-5 Catherine St, WC2B 5LA. T: 0844-482 9672. **D8**. Station: Covent Gdn.

### Bring Up The Bodies

The Royal Shakespeare Company's hit adaptation of the bestselling historical novel about Thomas Cromwell. Playing alongside the first in the series, *Wolf Hall*. Mon-Sat 7.30pm; Wed & Sat 2pm. Seats £10-£90. [www.rsc.org.uk](http://www.rsc.org.uk). Aldwych Theatre, 49 Aldwych, WC2B 4DF. T: 0844-453 9025. **D8**. Station: Charing Cross.

### Crucible, The

Richard Armitage (*The Hobbit*) stars in writer and director Yaël Farber's adaptation of Arthur Miller's classic play. Mon-Sat 7.30pm; Thur & Sat 2.30pm. Seats £10-£55. [www.oldvictheatre.com](http://www.oldvictheatre.com). Old Vic, 103 The Cut, SE1 8NB. T: 0844-871 7628. **F9**. Station: Waterloo.

### Curious Incident Of The Dog In The Night-Time, The

Award-winning play follows a 15-year-old boy with Asperger's syndrome as he investigates the murder of his neighbour's dog. Mon-Sat 7.30pm; Thur & Sat 2.30pm. Seats £15-£85. [www.curiousonstage.com](http://www.curiousonstage.com). Gielgud Theatre, Shaftesbury Ave, W1D 6AR. T: 020-7452 3000. **E7**. Station: Piccadilly Circus.

### Epstein: The Man Who Made The Beatles

Play about The Beatles' music manager Brian Epstein (p. 48). Mon-Sat 7.30pm; Thur 3pm; Sat 4pm. Tickets £25-£42.50. [www.leicester-squaretheatre.com](http://www.leicester-squaretheatre.com). Leicester Square Theatre, 6 Leicester Place, WC2H 7BX. T: 0844-873 3433. **E7**. Station: Leicester Sq.

### Ghost Stories

**LAST CHANCE** **To 17 Aug:** Genuine shocks galore, written and directed by Jeremy Dyson (*The League Of Gentlemen*) and Andy Nyman (*Severance*). Suitable for ages 15+. Tues-Fri 8pm; Sat 5pm & 8pm; Sun 4pm & 7pm. Seats £20-£55. [www.ghoststoriesheshow.co.uk](http://www.ghoststoriesheshow.co.uk). Arts, 6-7 Great Newport St, WC2 7JB. T: 020-7836 8463. **E8**. Station: Leicester Sq.

## Q & A Andrew Lancel

*Epstein: The Man Who Made The Beatles* opens in the West End this month after premiering in Liverpool in 2012. Andrew Lancel, who plays Epstein, tells us about the show.



**Were you already a fan of The Beatles?**  
I've been a huge fan ever since I was a boy. I only knew the broad strokes of Brian, and it's been a joy and a revelation getting to know him and play him.

**What research did you do to prepare?**  
Lots! I spoke to his family and friends, and walked where he walked. We wanted to show the real man. He was charming and funny. Yes, he had issues, and was gone far too soon at the age of 32, but he truly had a hand in changing the world and his journey was fascinating.

**Is there anything that will surprise the audience?**  
Hopefully I'm able to show the many sides of him. The thing that I learned early on is that this guy shone: he had charm and laughed a lot. He had to have a sense of humour to look after The Beatles. No one had ever done what The Beatles achieved, and Brian managed and moulded that on his own. It took its toll, but hopefully people will see the mark he left on the world with his boys.

**Readers should see Epstein because...**  
It's not a tribute to a tortured soul, it's an insight into a genius: funny and sad. I think people go away knowing and loving Brian. It's a window on to an incredible time and an incredible man. Plus it's got a fantastic new actor called Will Finlason in it, who is brilliant and sings so well.  
*For full listing, turn to p. 46*

### Hotel

**To 2 Aug:** Tense thriller from Polly Stenham about a family under pressure in a tropical paradise. Seats £12-£20. [www.nationaltheatre.org.uk](http://www.nationaltheatre.org.uk). Lyttelton, National Theatre, South Bank, SE1 9PX. T: 020-7452 3000. **E8.** Station: Waterloo.

### Importance Of Being Earnest, The

Oscar Wilde's classic comedy comes to life with the stars Nigel Havers (*Downton Abbey*) and Cherie Lunghi (*Secret Diary Of A Call Girl*). The story is retold through the prism of a modern-day acting group creating a play within a play. Mon-Sat 7.30pm; Wed & Sat 2.30pm. Seats £15-£85. [www.atgtickets.com](http://www.atgtickets.com). Harold Pinter Theatre, Panton St, SW1Y 4DN. T: 0844-871 7627. **E7.** Station: Piccadilly Circus.

### Invincible

**To 9 Aug:** Torben Betts's funny new play about a left-leaning couple's encounters with their neighbours following a move to the countryside. Stars inc Daniel Copeland, Laura Howard, Samantha Seager and Darren Strange. Mon-Sat 7.30pm; Thur & Sat 2.30pm. Seats £19-£46. [www.stjamestheatre.co.uk](http://www.stjamestheatre.co.uk). St James Theatre, 12 Palace Street, SW1E 5JZ. T: 0844-264 2140. **F7.** Station: Victoria.

### Jeeves & Wooster In Perfect Nonsense

Wonderful slapstick comedy, based on the works of P.G. Wodehouse, in which a country-house weekend takes a turn for the worse. James Lance and John Gordon Sinclair star. Mon-Sat 7.30pm; Wed & Sat 2.30pm. Seats £20-£85. [www.jeevesandwoosterplay.com](http://www.jeevesandwoosterplay.com). Duke of York's, 104 St Martin's Ln, WC2N 4BG. T: 0844-871 3051. **E8.** Station: Leicester Sq.

### Let The Right One In

After winning the prestigious South Bank Award, this play, based on the vampire movie, is in the West End for a strictly limited run. It tells the story of Oskar, a bullied teenage boy living with his mother on the edge of town, and the start of strange killings in the area. For ages 13+. Mon-Sat 7.45pm; Thur & Sat 3pm. Seats £19.50-£65. [www.apollotheatrelondon.co.uk](http://www.apollotheatrelondon.co.uk). Apollo Theatre, Shaftesbury Ave, W1D 7ES. T: 0844-482 9671. **E7.** Station: Piccadilly Circus.

### Macbeth

**LAST CHANCE To 16 Aug:** An immersive all-night promenade production of William Shakespeare's Scottish play in a secret East London location. Fri-Sat 8pm. Tickets £20-£40. [www.macbeth.in](http://www.macbeth.in).

### Medea

A powerful new version of Euripides' tragedy starring Helen McCrory and directed by Carrie Cracknell. Seats £15-£35. [www.nationaltheatre.org.uk](http://www.nationaltheatre.org.uk). Olivier, National Theatre, South Bank, SE1 9PX. T: 020-7452 3000. **E8.** Station: Waterloo.

### Mousetrap, The

A murderer strikes at a remote country house party, in Agatha Christie's classic whodunnit. Now more than 60 years old, this is the world's longest-running show. Mon-Sat 7.30pm; Tues 3pm; Sat 4pm. Seats £17.50-£65. [www.the-mousetrap.co.uk](http://www.the-mousetrap.co.uk). St. Martin's, West St, Cambridge Circus, WC2H 9NZ. T: 0844-499 1515. **D8.** Station: Leicester Sq.

### Nether, The

**LAST CHANCE To 9 Aug:** The virtual world is examined in this new American play. Mon-Sat 7.30pm; Thur & Sat 2.30pm. Seats £10-£32. [www.royalcourttheatre.com](http://www.royalcourttheatre.com). Royal Court Theatre, Sloane Sq, SW1W 8AS. T: 020-7565 5000. **G6.** Station: Sloane Sq.

### Not I/Footfalls/Rockaby

**19-30 Aug:** Triple bill of monologues by Samuel Beckett. 7.45pm. Days vary. Seats £19. [www.southbankcentre.co.uk](http://www.southbankcentre.co.uk). Royal Festival Hall, Southbank Centre, Belvedere Rd, SE1 8XX. T: 0844-545 8252. **E8.** Station: Waterloo.

### Richard III

Martin Freeman (*The Hobbit*) and Gina McKee (*Notting Hill*) star in Shakespeare's play about the ambitious king. Mon-Sat 7.30pm; Thur & Sat 2.30pm. Seats £15-£69.50. [www.atgtickets.com](http://www.atgtickets.com). Trafalgar Studio 2, 14 Whitehall, SW1A 2DY. T: 0844-871 7627. **E7.** Station: Charing Cross.

### Shakespeare In Love

This adaptation by Lee Hill (*Billy Elliot*) of the hit 1998 film about the Bard's (fictional) love affair with a noblewoman will transport you back to Shakespeare's London. Mon-Sat 7.30pm; Wed & Sat 2.30pm. Seats £12.50-87.50. [www.shakespeareinlove.com](http://www.shakespeareinlove.com). Noël Coward, 85-88 St. Martin's Ln, WC2N 4BG. T: 0844-482 5141. **E8.** Station: Leicester Sq.

### Skylight

**LAST CHANCE To 23 Aug:** Carey Mulligan (*The Great Gatsby*) and Bill Nighy (*Love Actually*) star in Stephen Daldry's revival of David Hare's drama about a former couple who consider rekindling an old flame. Mon-Sat 7.30pm; Wed & Sat 2.30pm. Seats £15-£97.50. [www.skylightwestend.com](http://www.skylightwestend.com). Wyndhams, Charing Cross Rd, WC2H 0DA. T: 0844-482 5120. **E7.** Station: Leicester Sq.

### Small Family Business, A

**LAST CHANCE To 27 Aug:** Alan Ayckbourn's comedy about entrepreneurial greed in the 1980s stars Nigel Lindsay (*Shrek The Musical*). Tickets £15-£50. [www.nationaltheatre.org.uk](http://www.nationaltheatre.org.uk). National Theatre, South Bank, SE1 9PX. T: 020-7452 3000. **E8.** Station: Waterloo.

### Streetcar Named Desire, A

Gillian Anderson (*The X-Files*) stars as troubled Blanche DuBois in Tennessee Williams' searing drama set in 1940s New Orleans. Ben Foster plays her unforgiving brother-in-law, Stanley, a role made famous by Marlon Brando. Mon-Sat 7.30pm; Wed & Sat 2.30pm. Seats £10-£35. [www.youngvic.org](http://www.youngvic.org). Young Vic, 66 The Cut, SE1 8LZ. T: 020-7922 2922. **E9.** Station: Waterloo/Southwark.

### War Horse

This heartbreaking World War I story, adapted from Michael Morpurgo's book, centres on the bond between a boy and his horse. Mon, Wed-Sat 7.30pm; Tues 7pm; Thur & Sat 2.30pm. Seats £15-£90. [www.warhorseonstage.com](http://www.warhorseonstage.com). New London, 166 Drury Ln, WC2B 5PW. T: 020-7452 3000. **D8.** Station: Holborn.

### Wolf Hall

The Royal Shakespeare Company's hit adaptation of the bestselling historical novel about Thomas Cromwell. It is playing alongside the second in

### DID YOU KNOW?

Performances of *Macbeth* have led to misfortunes such as the death of a lead actor.



## ENTERTAINMENT

the series, *Bring Up The Bodies*. Mon-Sat 7.30pm; Wed & Sat 2pm. Seats £10-£90. [www.rsc.org.uk](http://www.rsc.org.uk). Aldwych Theatre, 49 Aldwych, WC2B 4DF. T: 0844-453 9025. **D8**. Station: Covent Garden.

### Woman In Black, The

Ghostly goings-on at a windswept country estate, in a play based on Susan Hill's gothic-style 1983 book. Expect plenty of shocks as a solicitor heads to spooky Eel Marsh House to sort out the affairs of a dead recluse. Tues-Sat 8pm; Tues & Thur 3pm; Sat 4pm. Seats £17.50-£60. [www.thewomaninblack.com](http://www.thewomaninblack.com). Fortune, Russell St, WC2B 5HH. T: 0844-871 7626. **D8**. Station: Covent Gdn.

## OPEN-AIR PLAYS

### Antony And Cleopatra

**LAST CHANCE** To 24 Aug: One of the world's classic love stories, starring Olivier Award-winner Eve Best. Times vary. Tickets £5 (standing)-£38. [www.shakespearesglobe.com](http://www.shakespearesglobe.com). Shakespeare's Globe, 21 New Globe Walk, SE1 9DT. T: 020-7902 1400. **E9**. Station: London Bridge.

### Comedy Of Errors, The

**NEW** From 30 Aug: Slapstick fun in this Renaissance-themed production of Shakespeare's tale of mistaken identity (p. 44). Tickets £5 (standing)-£38. [www.shakespearesglobe.com](http://www.shakespearesglobe.com). Shakespeare's Globe, 21 New Globe Walk, SE1 9DT. T: 020-7401 9919. **E10**. Station: Borough.

### Gershwin's Porgy And Bess, The

To 23 Aug: George and Ira Gershwin's wonderful musical masterpiece features the hit songs *Summertime* and *It Ain't Necessarily So* (p. 44). Mon-Sat 7.45pm; Thur & Sat 2.15pm. Seats £25-£55. [www.openairtheatre.com](http://www.openairtheatre.com). Open Air Theatre, Regent's Park, NW1 4NU. T: 0844-826 4242. **C6**. Station: Baker St.



**MATILDA THE MUSICAL** brings to life Roald Dahl's classic children's story (p. 45)



Step back in time with the Royal Shakespeare Company's latest shows, *Bring Up The Bodies* (p. 46) and *Wolf Hall* (p. 48), which are playing at the Aldwych Theatre

### Holy Warriors

To 24 Aug: Epic play about the Crusades by acclaimed writer David Eldridge. It's a tale of holy war, fraught diplomacy and revenge in the struggle for Jerusalem (p. 44). Times vary. Tickets £5 (standing)-£38. [www.shakespearesglobe.com](http://www.shakespearesglobe.com). Shakespeare's Globe Theatre, Bankside, SE1 9DT. T: 020-7902 1400. **E9**. Station: Blackfriars.

### Julius Caesar

An Elizabethan-style staging of William Shakespeare's tense political drama which examines private virtue, mob violence and the emotions of people in power. Tickets £5 (standing)-£38. [www.shakespearesglobe.com](http://www.shakespearesglobe.com). Shakespeare's Globe, 21 New Globe Walk, SE1 9DT. T: 020-7401 9919. **E9**. Station: Blackfriars.

### To Kill A Mockingbird

From 28 Aug: Revival of last year's acclaimed adaptation of the Harper Lee novel (p. 44). Mon-Sat 7.45pm; Thur & Sat 2.15pm. Seats £25-£55. [www.openairtheatre.com](http://www.openairtheatre.com). Open Air, Inner Circle, Regent's Park, NW1 4NU. T: 0844-826 4242. **C6**. Station: Baker St.

### King Lear

6-9 Aug: William Shakespeare's classic story of an old king's descent into madness, starring Joseph Marcell who previously played the butler in the hit TV show *The Fresh Prince Of Bel-Air* (p. 44). Times vary. Tickets £5 (standing)-£38. [www.shakespearesglobe.com](http://www.shakespearesglobe.com). Shakespeare's Globe, 21 New Globe Walk, SE1 9DT. T: 020-7401 9919. **E10**. Station: Blackfriars.

## CONCERTS: CLASSICAL

### Cadogan Hall

16 Aug: Angela Brownridge piano recital (Chopin). **20-23 Aug**: *Anything Goes: A 50th Anniversary Celebration Of The Music Of Cole Porter*. Please check for full programme, times and prices. [www.cadoganhall.com](http://www.cadoganhall.com). 5 Sloane Terr, SW1X 9DQ. T: 020-7730 4500. **G6**. Station: Sloane Sq.

### Royal Albert Hall

To 13 Sep: *BBC Proms*. A season of daily orchestral classical music concerts and other musical events. Please check for full programme, prices and performance times. [www.royalalberthall.com](http://www.royalalberthall.com). Kensington Gore, SW7 2AP. T: 020-7589 8212. **F4**. Station: South Kensington.

### Royal Festival Hall

13 Aug: *Manhattan In West Side Story*. Please check for full programme, prices and performance times. [www.rfh.org.uk](http://www.rfh.org.uk). Southbank Centre, Belvedere Rd, SE1 8XX. T: 020-7960 4200. **E8**. Station: Waterloo.

### St. James's Piccadilly

This 1676 church, designed by Sir Christopher Wren, has a wonderful programme of evening concerts. Free lunchtime recitals every Mon, Wed & Fri 1.10pm. [www.sjp.org.uk](http://www.sjp.org.uk). 197 Piccadilly, W1J 9LL. T: 020-7734 4511. **E7**. Station: Piccadilly Circus.

### St. John's, Smith Square

10 Aug: National Youth Wind Orchestra Of Great Britain. Please check for full programme, prices and performance times. [www.sjss.org.uk](http://www.sjss.org.uk). Smith Sq, SW1P 3HA. T: 020-7222 1061. **F8**. Station: Westminster.

### St. Martin-In-The-Fields

Head to this 18th-century church, which was rebuilt between 1722 and 1724 by architect James Gibbs, for an extensive programme of concerts. There are free lunchtime music recitals at 1pm on Mon, Tues and Fri (p. 74). Please check for full programme, prices and performances times. [www.smitf.org](http://www.smitf.org). Trafalgar Sq, WC2N 4JJ. T: 020-7766 1100. **E8**. Station: Charing Cross.



It's your last chance to catch Carey Mulligan and Bill Nighy's portrayal of two ex-lovers rekindling their past romance in David Hare's classic drama, *Skylight* (p. 48)

## CONCERTS: POP, JAZZ & WORLD

### Eventim Apollo

(Formerly Hammersmith Apollo). **From 26 Aug:** Kate Bush (p. 8). [www.eventimapollo.com](http://www.eventimapollo.com). 45 Queen Caroline St, W6 9QH. T: 0844-844 4748. **Off map.** Station: Hammersmith.

### Indigo At The 02

**1 Aug:** Sir John Holt And The Reggae Philharmonic. A classic catalogue of reggae hits. **29 Aug:** Arijit Singh. The acclaimed Bollywood playback singer makes his UK debut. [www.theindigo2.com](http://www.theindigo2.com). Peninsula Sq, Greenwich, SE10 0AX. T: 0844-856 0202. **Off map.** Station: North Greenwich.

### Jazz Café

Live music and club nights. **2 Aug:** Finley Quaye And Tanisha Rose. **12 Aug:** Sister Sledge. **29 Aug:** DJ Format. [www.mamacolive.com/thejazzcafe](http://www.mamacolive.com/thejazzcafe). 5 Parkway, NW1 7PG. T: 020-7688 8899. **Off map.** Station: Camden Town.

### 02 Academy Brixton

Hosts gigs and club nights. **20 Aug:** Jane's Addiction. [www.o2academybrixton.co.uk](http://www.o2academybrixton.co.uk). 211 Stockwell Rd, SW9 9SL. T: 0844-477 2000. **Off map.** Station: Brixton.

### 02 Shepherd's Bush Empire

**17 Aug:** Nephew. Music from the Danish rock band. Please check for full programme, times and ticket prices. [www.o2shepherdsbushempire.co.uk](http://www.o2shepherdsbushempire.co.uk). Shepherd's Bush Green, W12 8TT. T: 0844-477 2000. **Off map.** Station: Shepherd's Bush.

### Purcell Room

**LAST CHANCE To 3 Aug:** *Shattered Cabaret: The Songs Of Kurt Weill*. Quebec's L'orchestre d'hommes-orchestres (LODHO) adapts the music of Kurt Weill. Please check for full programme, times and ticket prices. [www.southbankcentre.co.uk](http://www.southbankcentre.co.uk). Southbank Centre, Belvedere Rd, SE1 8XX. T: 020-7960 4200. **E8.** Station: Waterloo.

### Ronnie Scott's

**1-2 Aug:** Average White Band. **15-16 Aug:** Sun Ra Arkestra. **21-23 Aug:** The Original Blues Brothers Band featuring Steve Cropper and Lou Marini. **From 29 Aug:** Roy Ayers. Please check for full programme, times and ticket prices. [www.ronniescotts.co.uk](http://www.ronniescotts.co.uk). 47 Frith St, W1D 4HT. T: 020-7439 0747. **D7.** Station: Tottenham Court Rd.

### Roundhouse

**12 Aug:** Sinéad O'Connor. **24 Aug:** Imogen Heap. Please check for full programme, ticket times and prices. [www.roundhouse.org.uk](http://www.roundhouse.org.uk). Chalk Farm Rd, NW1 8EH. T: 0844-482 8008. **Off map.** Station: Chalk Farm.

## OPERA

### Bel Canto

A quartet of talented young singers, from the Guildhall School Of Music, entertain you while you dine at this French restaurant (Thur-Sat), performing popular opera arias. [www.lebelcanto.com](http://www.lebelcanto.com). Corus Hotel Hyde Park, 1 Lancaster Gate, W2 3LG. T: 020-7262 1678. **E4.** Station: Lancaster Gate.

### Opera Holland Park

New and classic productions in a gorgeous pastoral setting. **2, 6, 8 Aug:** *Norma*. A new production of the Bellini classic. **1, 5, 7, 9 Aug:** *Adriana Lecouvreur*. Francesco Cilea's tragic romance. **1, 2 Aug:** *Alice's Adventures In Wonderland*. A revival of the family classic, performed in promenade in the park. [www.rbkc.gov.uk/operahollandpark](http://www.rbkc.gov.uk/operahollandpark). Stable Yard, Holland Park, W8 6LU. T: 0300-999 1000. **Off map.** Station: High Street Kensington.

### Sarastro

Young opera singers perform popular arias alongside a string quartet of music students, to enhance your dining experience in this elaborately decorated restaurant. Sun & Mon 8.30pm-9.30pm; Sun 2.30pm. [www.sarastro-restaurant.com](http://www.sarastro-restaurant.com). 126 Drury Ln, WC2B 5QG. T: 020-7836 0101. **D8.** Station: Covent Gdn.

## DANCE

### London Coliseum

Home to the English National Ballet. **To 3 Aug:** *PUSH*. Sylvie Guillem dances in Russell Maliphant's sell-out contemporary production. **6-9 Aug:** *Solo For Two*. Dancers Natalia Osipova and Ivan Vasiliev join forces for a momentous show (p. 7). [www.eno.org](http://www.eno.org). London Coliseum, 33 St. Martin's Ln, WC2N 4ES. T: 020-7845 9300. **E8.** Station: Charing Cross/Leicester Sq.

### Queen Elizabeth Hall

**5-26 Aug:** *Groove On Down The Road*. Hit hip-hop dance company ZooNation returns with this family adventure (p. 12). Seats £22-£27. [www.southbankcentre.co.uk](http://www.southbankcentre.co.uk). Southbank Centre, Belvedere Rd, SE1 8XX. T: 020-7960 4200. **E8.** Station: Waterloo.

### Roundhouse

**To 1 Aug:** *Serpent/Fallen*. BalletBoyz present their award-winning show for the final time in London. **2 Aug:** *Graham Coxon*. Two-part acoustic performance. **To 7 Aug:** *Roundhouse Poetry Slam Heats 2014*. Poetry competition. **9 Aug:** *Camp (Live!)*. The award-winning performer Scottee is back with his sell-out show. Expect music, dance and outfit changes. **21, 24 Aug:** *Imogen Heap's Reverb*. Collaborations and interactive installations. Please check for performance times and prices. [www.roundhouse.org.uk](http://www.roundhouse.org.uk). Chalk Farm Rd, NW1 8EH. T: 0844-482 8008. **Off map.** Station: Chalk Farm.

### Royal Opera House

Home of The Royal Ballet (p. 45). **1-14 Aug:** *Swan Lake*. The Mariinsky Ballet performs Tchaikovsky's masterpiece. **8-9 Aug:** *Apollo/A Midsummer Night's Dream*. A mixed programme celebrating the work of choreographer George Balanchine. **11-12 Aug:** *The Firebird/Marguerite and Armand/Concerto DSCH*. Work by Fokine, Ashton and Ratmansky. **15-16 Aug:** *Cinderella*. Ratmansky's classic ballet, set to Prokofiev's score. Seats £10-£130. [www.roh.org.uk](http://www.roh.org.uk). Bow St, WC2E 9DD. T: 020-7304 4000. **D8.** Station: Covent Gdn.



## ENTERTAINMENT



### ODEON presents... the most luxury cinema experience in London

Exclusive menu overseen by consultant chef Rowley Leigh, delivered discretely to your cinema seat while you enjoy the latest films.

Also available for private hire, visit [odeon.co.uk/thelounge](http://odeon.co.uk/thelounge) to find out more and book tickets.

The Lounge is located at ODEON Whiteleys Queensway, W2 4YL  
 Queensway | Bayswater

the lounge  
FINE FOOD AND FILM

### CHILDREN & FAMILIES

#### Alice Through The Looking Glass

**To 30 Aug:** Based on Lewis Carroll's classic book, and set in church gardens. Mon-Sat 7pm; Thur & Sat 2.30pm. Seats £14-£18. [www.irisstheatre.com](http://www.irisstheatre.com). St. Paul's Church, Bedford St, WC2E 9ED. T: 020-8144 1898. **E8.** Station: Covent Garden.

#### Aliens Love Underpants

**LAST CHANCE To 31 Aug:** Based on the children's book by Claire Freedman and Ben Cort about some naughty aliens' adventures on Earth (p. 10). Tues-Fri 11am; Sat 10.15am; noon & 2pm; Sun 10.15am & noon. Seats £15-£21.50. [www.leicestersquaretheatre.com](http://www.leicestersquaretheatre.com). Leicester Square Theatre, 6 Leicester Place, WC2H 7BX. T: 0844-873 3433. **E7.** Station: Leicester Square.

#### Angelina Ballerina - The Mousical

**NEW 8-10 Aug:** A brand-new musical about everyone's favourite storybook mouse. Fri & Sat 4pm; Sat & Sun 11am & 1.30pm. Seats £13.50-£16.50. [www.ambassadorickets.com](http://www.ambassadorickets.com). Richmond, The Green, Richmond, TW9 1QJ. T: 0844-871 7651. **Off map.** Station: Richmond.

#### Elephantom, The

This adaptation of the children's picture book about a little girl who is visited by a giant blue ghost-elephant has transferred from the National Theatre. Mon-Wed & Fri 2.30pm; Tues-Wed & Fri 11.30am; Thur & Sat 10am. Tickets £13-£20. [www.nationaltheatre.org.uk](http://www.nationaltheatre.org.uk). New London Theatre, 166 Drury Lane, WC2B 5PW. T: 020-7452 3000. **D8.** Station: Covent Garden.

#### Moominsummer Madness

**To 16 Aug:** Puppetry, live music and humour as the popular characters come to the stage. Suitable for ages 4-8. Times vary. Tickets £9-£13.50. [www.polkatheatre.com](http://www.polkatheatre.com). Polka, 240 The Broadway, SW19 1SB. T: 020-8543 4888. **Off map.** Station: Wimbledon/South Wimbledon.

#### Tiger Who Came To Tea, The

Delightful adaptation of Judith Kerr's popular children's book about an unexpected visitor who happens to be very stripy and very cheeky. Suitable for ages 3+. Check for full times. Seats £14.50-£17.75. [www.nimaxtheatres.com](http://www.nimaxtheatres.com). Lyric, Shaftesbury Ave, W1D 7ES. T: 0844-482 9674. **E7.** Station: Piccadilly Circus.

### FESTIVALS & SEASONS

#### BBC Proms

Classical music festival which mostly takes place at the Royal Albert Hall. [www.bbc.co.uk/proms](http://www.bbc.co.uk/proms). Royal Albert Hall, Kensington Gore, SW7 2AP. T: 0845-401 5040. **F4.** Station: South Kensington.

#### Camden Fringe

**To 24 Aug:** Nearly 200 eclectic performances at various venues around the Camden area, inc cabaret, comedy, feisty theatre and kids' events. The emphasis is on new, cutting-edge entertainment. [www.camdenfringe.com](http://www.camdenfringe.com).

#### Canary Wharf Jazz Festival

**15-17 Aug:** Riot Jazz Brass Band, Ciyo Brown's The Motown Sound and the Andy Sheppard Quartet headline London's biggest free jazz festival (p. 46). [www.canarywharf.com](http://www.canarywharf.com). Canada Square Park, Canary Wharf, E14 5AX. T: 020-7001 3016. **Off map.** Station: Canary Wharf.

**LET IT BE**

POLLY JAMES, ABSOLUTE RADIO

“BEATLEMANIA IS BACK!”  
TONY DIBBIN, CAPITAL GOLD

ALSO ROCKIN' SUNDAYS AT 3.30PM & 7PM

**GARRICK THEATRE**  
0844 412 4662 • [LetItBeLive.com](http://LetItBeLive.com)

#### Film4 FrightFest

**21-25 Aug:** The capital's festival of horror films, with more than 50 movies being screened.

**21 Aug:** *The Guest/Housebound/Zombeavers*.

**22 Aug:** *Shockwave Darkside 3D/The Green Inferno/Late Phases/Dead Snow 2: Red vs. Dead/The Last Showing*. Seats £13 (festival passes from £29). [www.frightfest.co.uk](http://www.frightfest.co.uk). Vue West End (Leicester Square), 3 Cranbourn St, WC2H 7AL. T: 020-8296 0555. **E7.** Station: Leicester Sq.

#### Film4 Summer Screen

**7-20 Aug:** Classic, cult and contemporary movies presented on London's largest outdoor screen (p. 8). **7 Aug:** *Two Days, One Night*. **8 Aug:** *Rosemary's Baby*. **9 Aug:** *A Fistful Of Dollars/Mad Max 2*.

**10 Aug:** *Gentlemen Prefer Blondes*. **11 Aug:** *Sense And Sensibility*. **12 Aug:** *Annie Hall*. **13 Aug:** *20,000 Days On Earth*. Seats from £16. Check website for full programme, times and prices. [www.somerset-house.org.uk/film](http://www.somerset-house.org.uk/film). Somerset House, Strand, WC2R 1LA. T: 0844-847 1715. **E8.** Station: Temple.

#### Glyndebourne

**LAST CHANCE** To **24 Aug:** One of the UK's premier opera festivals, with top companies. Ticket holders can enjoy a pre-concert picnic on the beautiful lawns while dressed in formal eveningwear, before heading into the theatre. Performances this month inc *La Traviata* (Verdi) and *Rinaldo* (Handel). Check for full listings. [www.glyndebourne.com](http://www.glyndebourne.com). Glyndebourne, four miles north of Lewes, East Sussex, BN8 5UU. T: 01273-813 813. **Off map.** Station: Lewes, then coach/taxi.

#### Hanover Rules!

Celebrating 300 years of the Hanoverian Succession, the Handel House Museum features various performers live in concert, from flautists to harpsichordists. Seats £9. [www.handelhouse.org](http://www.handelhouse.org). Handel House Museum, 25 Brook St, W1K 4HB. T: 020-7495 1685. **D6.** Station: Bond St.

#### Kids Week In The West End

**1-31 Aug:** Annual initiative offering free theatre tickets to children under the age of 16 (with accompanying adults) to dozens of popular West End shows (p. 11). Check website for information on participating productions and free events on stage and backstage at theatres. [www.kidsweek.co.uk](http://www.kidsweek.co.uk). T: 0844-248 5151.

#### LolliBop Festival

**15-17 Aug:** The UK's biggest festival for children is packed with an impressive line-up of attractions and activities. Catch television favourites inc Sam & Mark and Bear Grylls, or try your hand at a host of activities (p. 10). Tickets from £20. [www.lolliBopfestival.com](http://www.lolliBopfestival.com). Hatfield House, Great North Rd, Hatfield, Hertfordshire, AL9 5NQ. **Off map.** Station: King's Cross to Hatfield.

#### London Wonderground

Summer-long festival, housed in a traditional circus Spiegel tent, is a feast of magic shows, comedy, cabaret and music. [www.londonwonderground.co.uk](http://www.londonwonderground.co.uk). Jubilee Gdns, Belvedere Rd, SE1 8XX. T: 0844-545 8282. **E8.** Station: Waterloo.

#### More London Free Theatre Festival

**6-31 Aug:** An adaptation of Wagner's *Ring Cycle* presented in four bite-sized 45-minute productions in an outdoor amphitheatre (p. 44). [www.morelondon.com/thescoop](http://www.morelondon.com/thescoop). The Scoop, More London Riverside, SE1 2DB. T: 020-7403 4866. **E11.** Station: London Bridge.

ALFRED HITCHCOCK'S  
**'THE 39 STEPS'**  
Adapted by PATRICK BARLOW

**'HILARIOUS'**  
SUNDAY EXPRESS

THE WORLD'S FAVOURITE COMEDY  
SEEN BY OVER 3 MILLION PEOPLE IN OVER 39 COUNTRIES  
0844 847 1778  
love39steps.com  
CRITERION THEATRE  
PICCADILLY CIRCUS W1  
From an original concept by SIMON CORBLE & NOBBY DIMON

**BEST COMEDY** OLIVIER AWARDS 2014

Mark Heap Robert Webb

**JEEVES & WOOSTER**  
in Perfect Nonsense

A NEW PLAY ADAPTED FROM THE WORKS OF P.G. WODEHOUSE  
BY THE GODDALE BROTHERS  
DIRECTED BY SEAN FOLEY

Duke of York's Theatre  
0844 871 3051 | JeevesAndWoosterPlay.com

[www.wheretraveler.com](http://www.wheretraveler.com) 55



# BILLY ELLIOT

## THE MUSICAL

**'PURE MAGIC'**  
SUNDAY EXPRESS

**'THRILLING'**  
TIME OUT

[BillyElliotTheMusical.com](http://BillyElliotTheMusical.com) | 0844 248 5000  
Victoria Palace Theatre | London Victoria |

### STOMP SPEAKS ALL LANGUAGES!

**'EXPECT TO BE AMAZED'**  
SUNDAY TELEGRAPH

# STOMP

**AMBASSADORS THEATRE** | 08448 112 334 | [StompLondon.com](http://StompLondon.com)

Photograph by Steve McElhinis

## ENTERTAINMENT

### Notting Hill Carnival

**24-25 Aug:** Europe's biggest street festival sees this West London neighbourhood transformed into miles of colourful costumes, steel bands, sound systems and stalls selling Caribbean food (p. 6). Carnival band parade 9am-7pm; Sun is family day. Please check for details of times, routes and transport. [www.thenottinghillcarnival.com](http://www.thenottinghillcarnival.com). Notting Hill, W11. **Off map.** Station: Notting Hill Gate/Latimer Rd/Bayswater.

### Roundhouse Summer Sessions

**To 18 Aug:** A new festival of music, dance, spoken word and film, inc a live orchestral screening of *There Will Be Blood* (**6-7 Aug**). **2 Aug:** Graham Coxon. **9 Aug:** Funk Da Cirque: Soul Trip. **10 Aug:** Penguin Cafe. **12 Aug:** Sinéad O'Connor. **13 Aug:** Stornoway. **16 Aug:** Nest Collective. **18 Aug:** Kid Koala. Please check for full listings. [www.roundhouse.org.uk](http://www.roundhouse.org.uk). Roundhouse, Chalk Farm Rd, NW1 8EH. T: 0844-482 8008. **Off map.** Station: Chalk Farm.

### South West Four Weekender

**23-24 Aug:** London's electronic festival takes over Clapham Common, its main stage playing host to top DJs and music talent inc Alesso, Sasha, Eric Prydz, Deamau5, Laurent Garnier, Skream, Andy C, Pete Tong, Sasha, MJ Cole and Mike Skinner. Please check for full listings. [www.southwestfour.com](http://www.southwestfour.com). Clapham Common, SW4 9DE. T: 0844-847 2467. **Off map.** Station: Clapham Common.

### Tête À Tête – The Opera Festival

**To 10 Aug:** Putting a kick into opera, this unconventional festival showcases more than 30 works from the 21st century, hosted by opera company Tête À Tête. Up to three performances a night from, among others, Cambridge City Opera, the Future Opera Company and Constella Ballet & Orchestra. Please check website for full listings. Seats £7.50-£9.50. [www.tete-a-tete.org.uk](http://www.tete-a-tete.org.uk). 90 York Way, N1 9AG. T: 020-7520 1490. **Off map.** Station: King's Cross St. Pancras.

## FILM

### Barbican Film

Varied programme of films and festivals across its three cinemas, with a diverse programme, inc old favourites and new releases. Please check for full programme, times and prices. [www.barbican.org.uk](http://www.barbican.org.uk). Silk St, EC2Y 8DS. T: 020-7638 4141. **D10.** Station: Barbican.

### BFI Southbank

Enjoy film and TV from the archives of the British Film Institute (BFI). [www.bfi.org.uk](http://www.bfi.org.uk). Belvedere Rd, SE1 8XT. T: 020-7928 3232. **E8.** Station: Waterloo.

### Institute Of Contemporary Arts (ICA)

Art-house cinema screening films from around the world. The venue also houses an art gallery, café/bar and excellent bookshop. [www.ica.org.uk](http://www.ica.org.uk). The Mall, SW1Y 5AH. T: 020-7930 3647. **E7.** Station: Piccadilly Circus.

### The Lounge At ODEON Whiteleys

Watch films in the intimate screening rooms, with comfortable leather seats, while dining on an exclusive menu from chef Rowley Leigh, with the food served directly to your seat. Please check for full programme, times and prices. [www.odeon.co.uk/thelounge](http://www.odeon.co.uk/thelounge). Whiteleys Of Bayswater, Queensway, W2 4YL. T: 0871-2244 007. **Off map.** Station: Queensway.