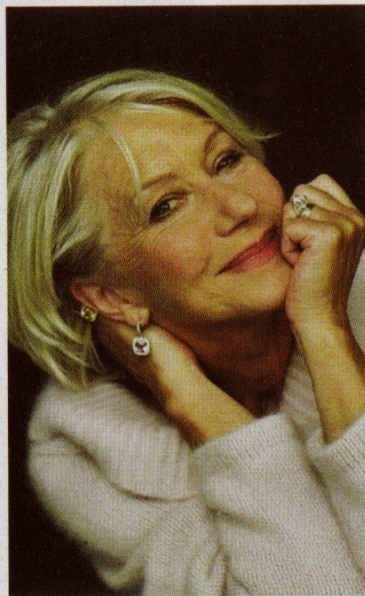




THE WOMEN OF WORLD WAR II

ITINERARY: GREAT WOMEN OF LONDON

To mark International Women's Day on 8 Mar, make a date with London's female legends. *By Jo Caird*



① REMARKABLE ROYALS

Queen Elizabeth II celebrates 60 years on the throne in 2013, making her the second longest reigning British monarch. She's beaten by Queen Victoria, who ruled for 63 years, from 1837 until her death in 1901. Elizabeth I was on the throne for 44 years. Admire Windsor Castle, (p. 44), one of the Queen's homes; learn about Victoria at Kensington Palace (including seeing her baby shoes, pictured bottom; p. 30); and visit the Tower Of London (p. 38), where Elizabeth was imprisoned in 1554.

② THE FIGHT FOR EQUALITY

London was the scene of many triumphs for the women's suffrage movement, which used a range of peaceful and militant tactics to lobby for women's right to vote at the beginning of the 20th century. Take the *London Suffragettes Walk* from **London Town Walks** (p. 43) for insights into the movement and see the Museum Of London's (p. 58) fascinating collection of memorabilia, such as the medal for valour pictured above.

③ WOMEN IN WARTIME

While war has traditionally been the preserve of men, women's role must not be underestimated. The **National Monument To The Women Of World War II** was unveiled in Whitehall in 2005, the sculpture's 17 sets of clothing representing the wide range of jobs undertaken by women during wartime (pictured, top). Meanwhile, the **Florence Nightingale Museum** (p. 57) tells the story of the pioneering 19th-century social reformer and her Jamaican-born counterpart Mary Seacole, who came to prominence following their work as nurses during the Crimean War.

④ LITERARY GREATS

London has been home to many of British literature's top women and even more are memorialised here. The great 19th-century novelist George Eliot is buried in **Highgate Cemetery** (pictured, far left; Swain's Lane, N6 6PJ. ☎ 020 8340 1834. 🌐 highgate-cemetery.org 📍 Highgate. Off map) and Poets' Corner at **Westminster Abbey** (p. 38) has memorials to legends including Jane Austen and Elizabeth Barrett Browning. Learn about Virginia Woolf and her set on the weekly *Literary Bloomsbury & The Old Museum Quarter Walk* from **London Walks** (p. 43).

⑤ STARS OF STAGE AND SCREEN

Two of British theatre's grand Dames are in the West End this month, with Helen Mirren (pictured, above left) playing the Queen in **The Audience** (p. 72), and Judi Dench starring in **Peter And Alice** (p. 74) at the Noël Coward Theatre. And if it's the pictures you love, **Birds Eye View 2013 Film Festival** (🌐 birds-eye-view.co.uk), which celebrates women filmmakers, is launching on **8 Mar** at the BFI (p. 68) with a special International Women's Day screening of the Saudi Arabian film *Wajda*.